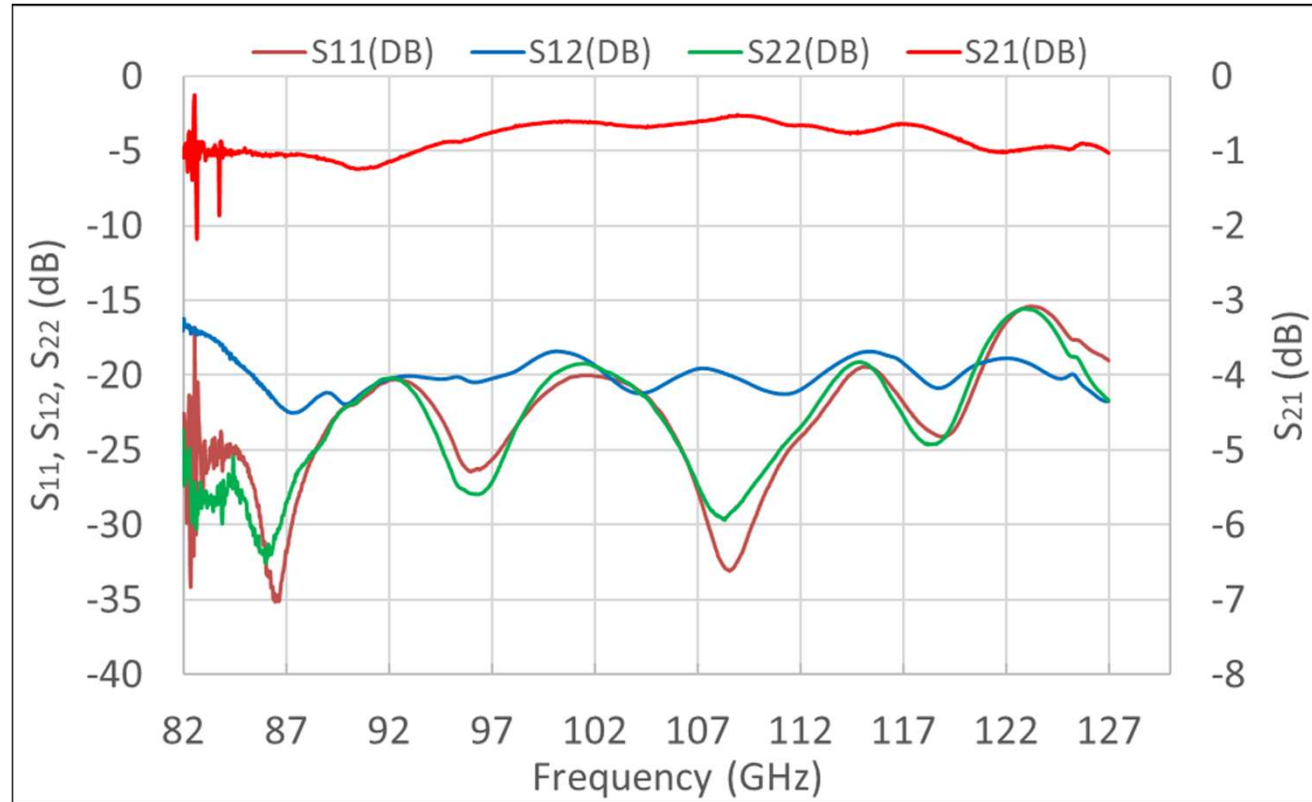
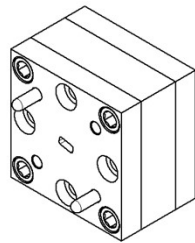
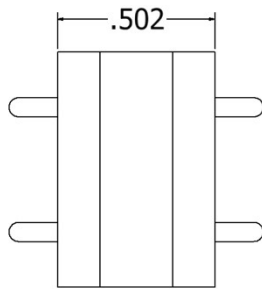
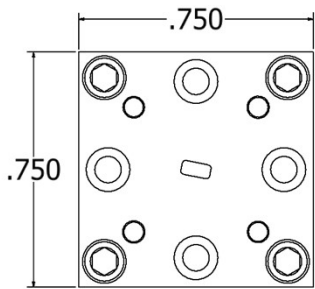


# Model: FR90CM2

## Specifications

Flange	WR-9*
Frequency (GHz)	82-122
Insertion Loss (dB, typ, 300K)	0.9
Insertion Loss (dB, typ, 77 K)	0.7
Isolation (dB, typ, 300 K)	19
Isolation (dB, typ, 77 K)	25
Input Return Loss (dB, typ)	20
Output Return Loss (dB, typ)	20
VSWR (max)	1.4:1
Maximum Power (W)	0.9
Diamond Heatsink	No

\* WR-9 is a non-standard band.  
 Every isolator is tested on a vector network analyzer to ensure conformity.  
 Internally, FR90C and FR90CM2 are identical.



Testing was done at room temperature using a PNA with WR-8 frequency extension modules rated for 90-140 GHz. The ringing below 85 GHz is systemic and not caused by the isolator. Cryogenic tests are coming.