

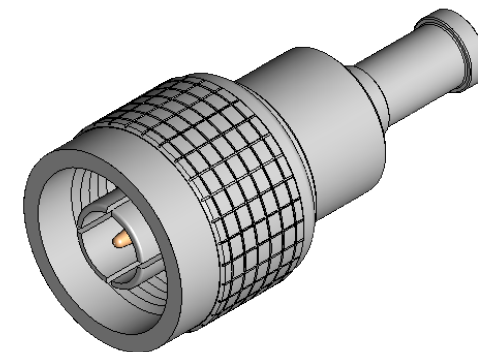
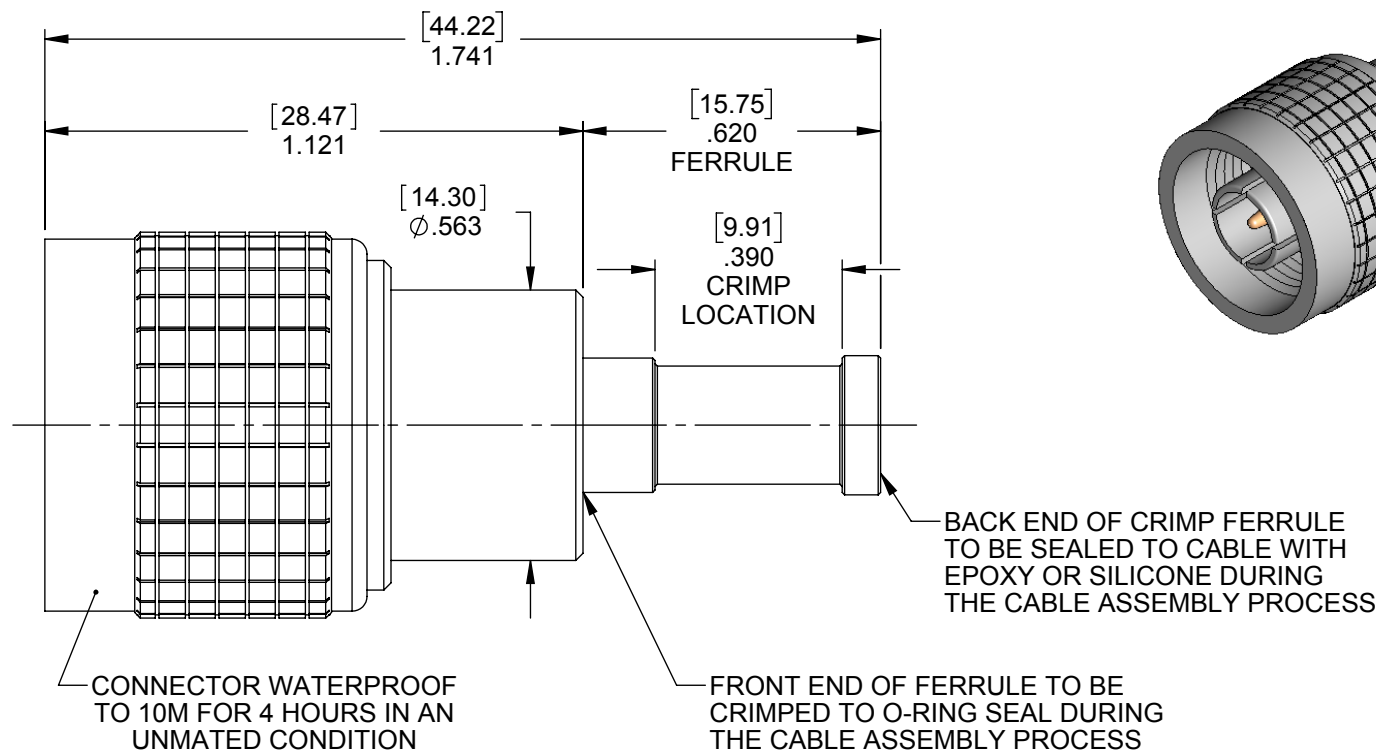
**MATERIAL/FINISH PROPERTIES**

**MATERIAL PROPERTIES:**  
 BODY: BRASS PER ASTM B16 OR EQUIVALENT  
 CONTACT: BRASS PER ASTM B16 OR EQUIVALENT  
 INSULATOR: PTFE PER ASTM D1710 OR EQUIVALENT  
 GASKETS: SILICONE RUBBER PER ZZ-R-765 OR EQUIVALENT

**PLATING PROPERTIES:**  
 BODY: .000100 MIN. NICKEL PER QQ-N-290  
 CONTACT: .000030 MIN. GOLD PER MIL-G-45204 OVER  
 .000050 MIN. NICKEL PER QQ-N-290

**MECHANICAL/ELECTRICAL PROPERTIES**

CONNECTOR MEETS: MIL-STD-348 FIG. 304-1, MIL-PRF-39012  
 CONNECTOR MEETS: RoHS 2002/95/EC STANDARDS  
 CONNECTOR DURABILITY: 500 CYCLES MIN.  
 CABLE: RG58 OR EQUIVALENT  
 ASSEMBLY INSTRUCTIONS: AI525  
 IMPEDANCE: 50 OHMS NOMINAL  
 FREQUENCY RANGE: DC-12 GHz  
 VOLTAGE RATING: 1,000 VRMS  
 INSULATION RESISTANCE: 5,000 MEGOHMS  
 DIELECTRIC WITHSTANDING VOLTAGE: 2,500 VRMS



**IntelliConnect**

**TITLE:** N-TYPE SEALED STRAIGHT CABLED PLUG

**MATERIAL & FINISH:** PER TABLE ABOVE

<b>DRAWN BY:</b> NB	<b>CHECK BY:</b> MS	<b>APPR. BY:</b> REP
<b>DATE:</b> 09/29/16	<b>DATE:</b> 09/29/16	<b>DATE:</b> 09/29/16

<b>CAGE CODE NO:</b> 5N5S5	<b>SCALE</b> 2.5:1	<b>SIZE</b> A	<b>REV</b> 1
----------------------------	-----------------------	------------------	-----------------

<b>SALES DRAWING</b>	<b>PART NO.</b> 5125-P1NN-309-102N	<b>SHEET</b> 1 OF 1
----------------------	---------------------------------------	------------------------

**UNLESS OTHERWISE SPECIFIED**

ALL DIMENSIONS ARE REFERENCE  
 X.XXX DIM'S = INCHES \* [X.XX] DIM'S = MILLIMETERS  
 SURFACE FINISH: 63 MICRO MAX.  
 ALL DIAMETERS TO BE CONCENTRIC WITHIN .005 F.I.M.

1	NPR1309E	REP	09/29/16
<b>REV</b>	<b>DESCRIPTION</b>	<b>APPR</b>	<b>DATE</b>