

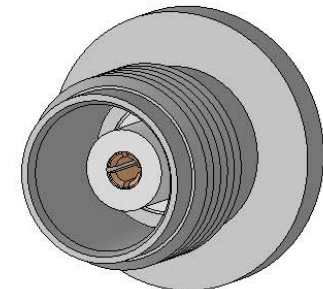
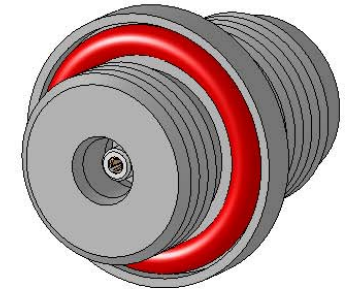
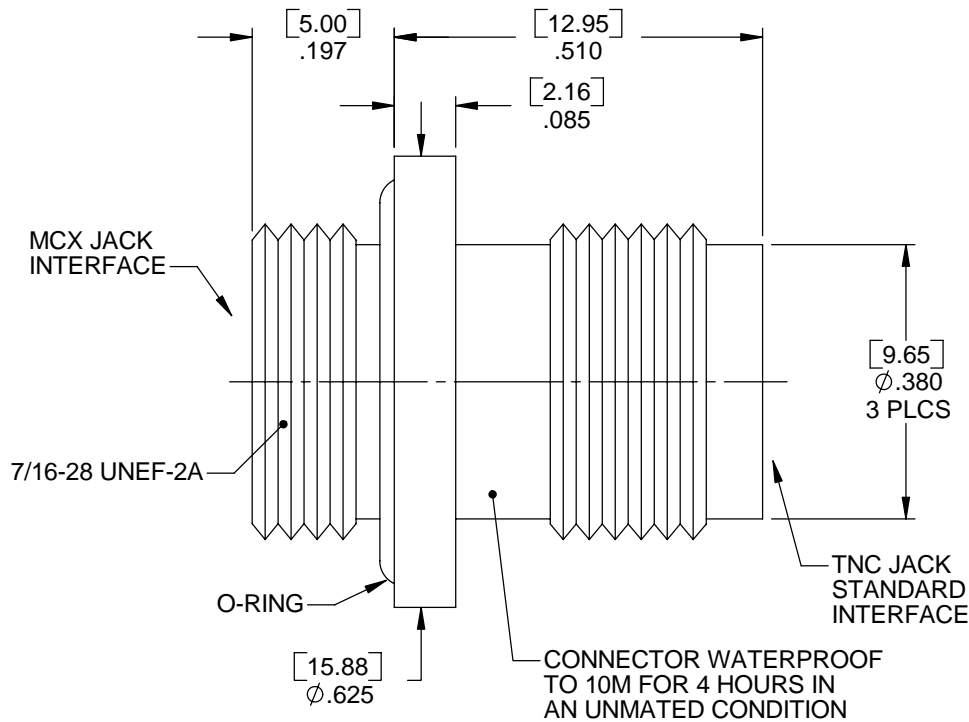
**MATERIAL/FINISH PROPERTIES**

**MATERIAL PROPERTIES:**  
 BODY: BRASS PER ASTM B16 OR EQUIVALENT  
 CONTACT: BERYLLIUM COPPER PER ASTM B196 OR EQUIVALENT  
 INSULATOR: PTFE PER ASTM D1710 OR EQUIVALENT  
 O-RINGS: SILICONE RUBBER PER ZZ-R-765 CLASS II-B OR EQUIVALENT

**PLATING PROPERTIES:**  
 BODY: .000100 MIN. NICKEL PER QQ-N-290  
 CONTACT: .000030 MIN. GOLD PER MIL-G-45204 OVER  
 .000050 MIN. NICKEL PER QQ-N-290

**MECHANICAL/ELECTRICAL PROPERTIES**

CONNECTOR MEETS: CECC 22 220, MIL-PRF-39012, MIL-STD-348  
 CONNECTOR MEETS: RoHS 2002/95/EC STANDARDS  
 CONNECTOR DURABILITY (MCX): 500 CYCLES MIN.  
 CONNECTOR DURABILITY (TNC): 500 CYCLES MIN.  
 MOUNTING: PER ES117-BK600  
 PANEL THICKNESS: .197 [5.0] MAX.  
 IMPEDANCE: 50 OHMS NOMINAL  
 FREQUENCY RANGE: DC-6 GHZ  
 VOLTAGE RATING: 335 VRMS  
 INSULATION RESISTANCE: 1,000 MEGOHMS  
 DIELECTRIC WITHSTANDING VOLTAGE: 1,000 VRMS



**IntelliConnect**

**UNLESS OTHERWISE SPECIFIED**

ALL DIMENSIONS ARE REFERENCE  
 X.XXX DIM'S = INCHES \* [X.XX] DIM'S = MILLIMETERS  
 SURFACE FINISH: 63 MICRO MAX.  
 ALL DIAMETERS TO BE CONCENTRIC WITHIN .005 F.I.M.

**TITLE:** TNC JACK TO SPECIAL MCX JACK SEALED ADAPTER

**MATERIAL & FINISH:** PER TABLE ABOVE

<b>DRAWN BY:</b> TLB	<b>CHECK BY:</b> PCS	<b>APPR. BY:</b> SRS
<b>DATE:</b> 08/26/04	<b>DATE:</b> 08/26/04	<b>DATE:</b> 08/26/04

<b>CAGE CODE NO:</b> 5N5S5	<b>SCALE:</b> 4:1	<b>SIZE:</b> A	<b>REV:</b> A
----------------------------	-------------------	----------------	---------------

<b>SALES DRAWING</b>	<b>PART NO.</b> A5722-1BK-100N	<b>SHEET</b> 1 OF 1
----------------------	-----------------------------------	------------------------

A	ECN 1115	SRS	12/15/05
<b>REV</b>	<b>DESCRIPTION</b>	<b>APPR</b>	<b>DATE</b>