

MATERIAL/FINISH PROPERTIES (HIGH DENSITY SMPM CONNECTOR)

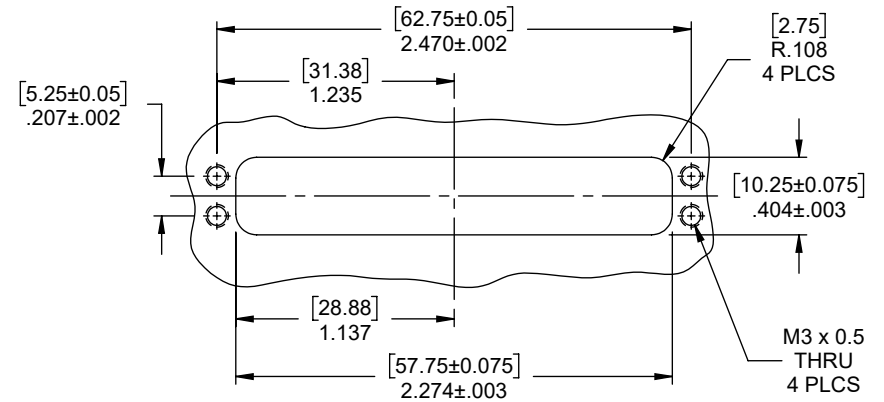
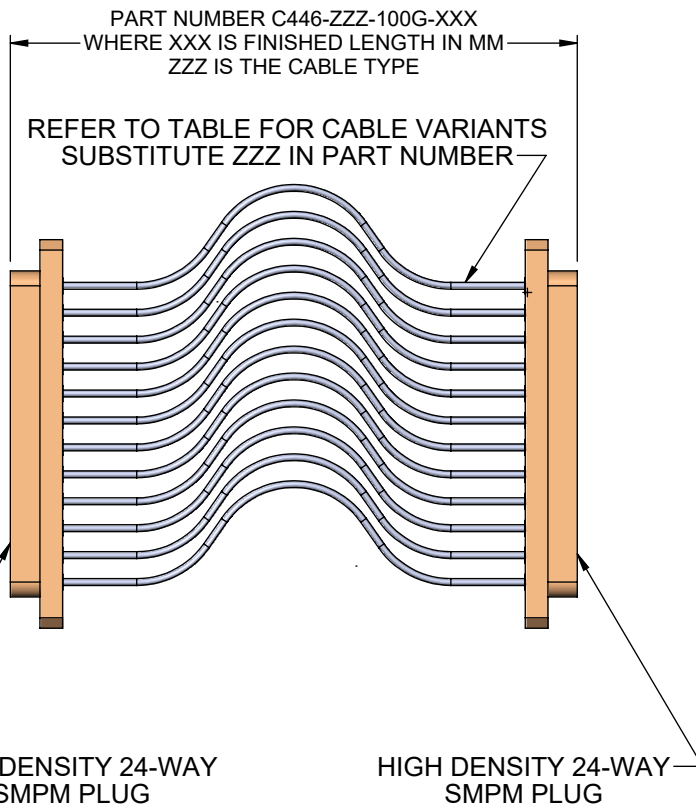
MATERIAL PROPERTIES:
 BODIES: COPPER (OHFC)
 BUSHINGS: BERYLLIUM COPPER PER ASTM B196 OR EQUIVALENT

PLATING PROPERTIES:
 BODIES: .000040 MIN. GOLD PER MIL-G-45204 OVER
 .000050 MIN. COPPER PER MIL-C-14550
 BUSHINGS: .000040 MIN. GOLD PER MIL-G-45204 OVER
 .000050 MIN. COPPER PER MIL-C-14550

MECHANICAL/ELECTRICAL PROPERTIES

HIGH DENSITY SMPM CONNECTOR MEETS: MIL-STD-348, MIL-PRF-39012
 ASSEMBLY MEETS: RoHS 3 2015/863/EU STANDARDS
 CONNECTOR DURABILITY: 100 CYCLES MIN.
 CABLE: .047" SEMI-RIGID, SEE TABLE FOR VARIANTS
 IMPEDANCE: 50 OHMS NOMINAL
 FREQUENCY RANGE: DC-40 GHz

MOUNTING HOLE DIMENSIONS



ZZZ Cable Type	Cable Description	Ref
127	BeCu Inner / BeCu Outer	BCB034
106	Silver Plated BeCu Inner / BeCu Outer	BCB006
123	304 SS Inner / 304 SS Outer	BCB019
118	Silver Plated 304 SS Inner / 304 SS Outer	BCB028
114	Cupronickel Inner / Cupronickel Outer	BCB021
104	Silver Plated Cupronickel Inner / Cupronickel Outer	BCB025
092	NbTi Inner / NbTi Outer	BCB007
128	Silver Plated Copper Inner / Copper Outer	BCB039

IntelliConnect

TITLE: HIGH DENSITY 24-WAY PLUG TO HIGH DENSITY 24-WAY PLUG CABLE ASSEMBLY

MATERIAL & FINISH: PER TABLE ABOVE

UNLESS OTHERWISE SPECIFIED

ALL DIMENSIONS ARE REFERENCE

X.XXX DIM'S = INCHES * [X.XX] DIM'S = MILLIMETERS

SURFACE FINISH: 63 MICRO MAX.

ALL DIAMETERS TO BE CONCENTRIC WITHIN .005 F.I.M.

DRAWN BY: NB
DATE: 11/22/21

CHECK BY: MS
DATE: 11/22/21

APPR. BY: REP
DATE: 11/22/21

CAGE CODE NO: 5N5S5

SCALE
3:4

SIZE
A

REV
A

SALES DRAWING

PART NO.
C446-ZZZ-101G-

SHEET
1 OF 1

REV	DESCRIPTION	APPR	DATE
A	NPR 1914E	REP	11/22/21